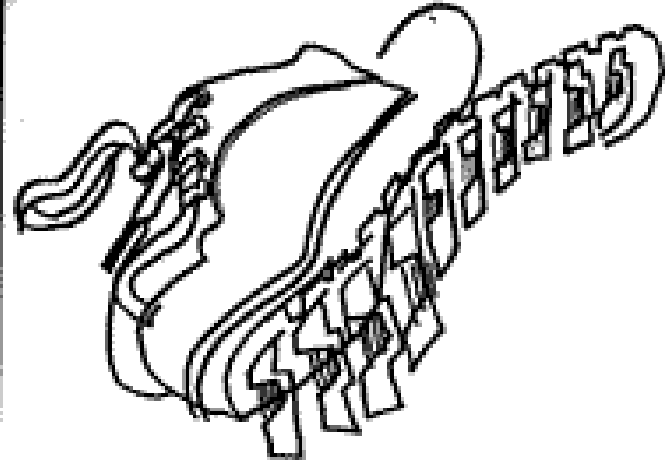
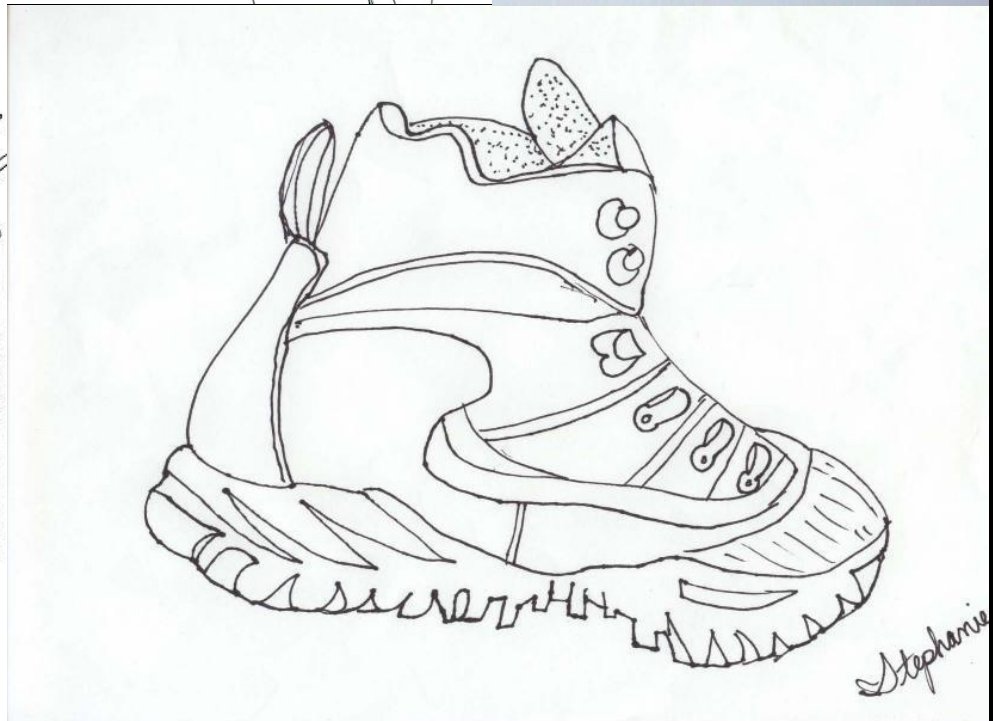


# Contour line



H y dangea



Stephanie

# **Contour Drawing:** a simplification of what you see

The purpose of contour drawing is to emphasize the mass and volume of the subject rather than the detail; the focus is on the outlined shape of the subject and not the minor details.



# Contour line



Contour means "outline", and presents exterior edges of objects. A plain contour has a clean, connected line, no shading and emphasizes an open "shell" of the subject.

Pencil drawing, ball point pen and black markers are good practice tools

When creating a contour drawing, draw slowly and carefully – it makes you pay attention to the object



Contour drawings only use lines  
– no shading



Instead of shading a dark area, outline the shadow or highlight (usually subtle areas where surfaces curve or bend)



If its difficult to decide where a line should go, draw what you think is most obvious



Vary the thickness of your lines by:

- using multiple pencils
- adjusting the pressure as you draw





Most obvious lines: DARK  
Minor lines and edges: LIGHTER



Don't be afraid of making mistakes!



# Blind Contour Line Drawing

Blind contour drawing is done by looking intently at the edge of an object, but never looking at the paper while the pencil moves. We call it blind because we are not allowed to look at the drawing paper while the pencil moves.

# What is the purpose?

- Improve hand-eye coordination
- Forces you to LOOK at the object you are drawing
- Understand representational drawing is all about OBSERVATION

# 2 Rules

1. Once your pencil is placed on the surface, you may NOT look at it again
2. DO NOT look at the paper 😊

You must try to move your pencil at the same speed as your eyes move over the surface of the contour lines of an object

[Roller Skate](#)